

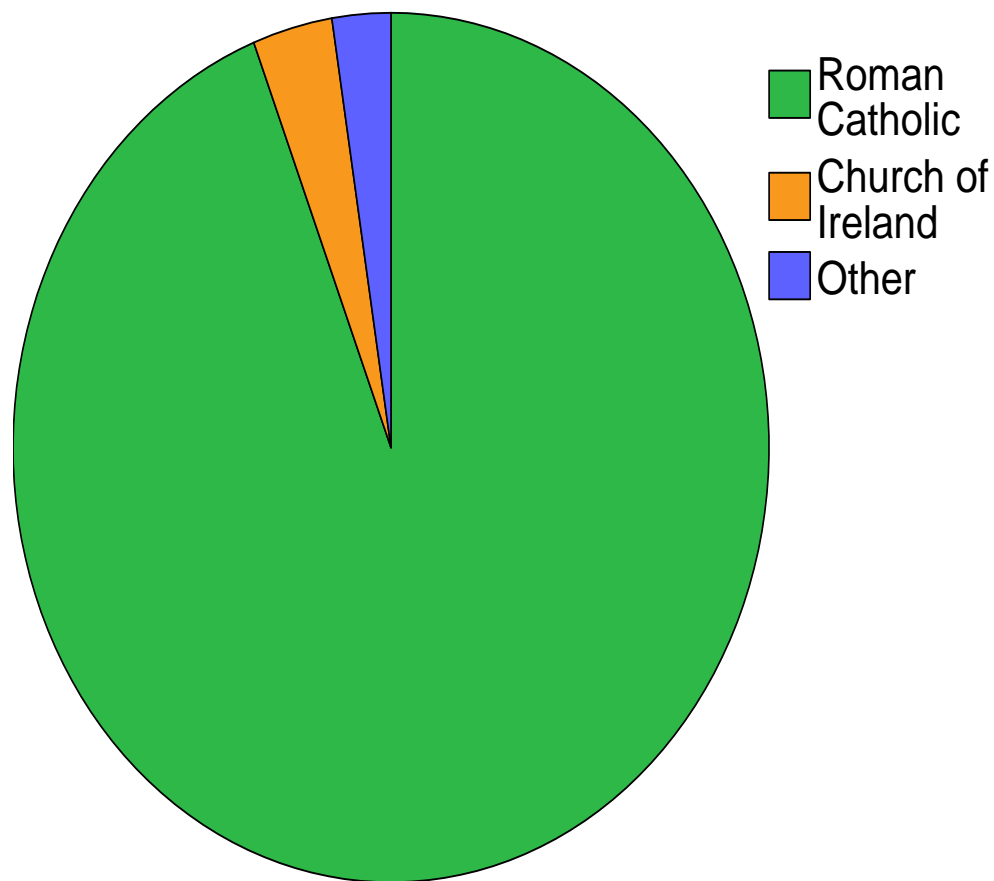


Change and Decay in all around I see

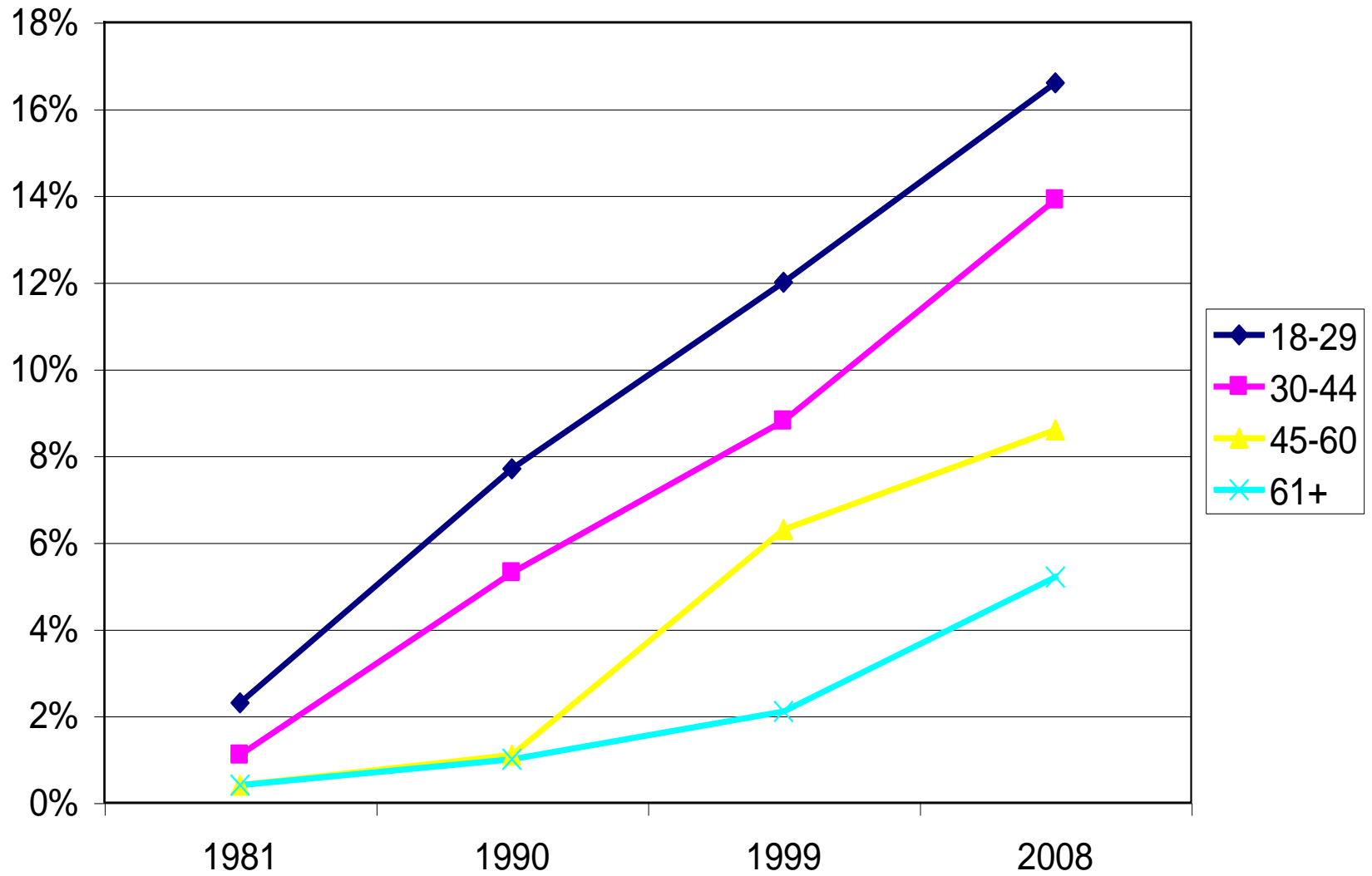
*Changing patterns of religious faith
and practice in Ireland, 1981 -2008*

Religious Denomination

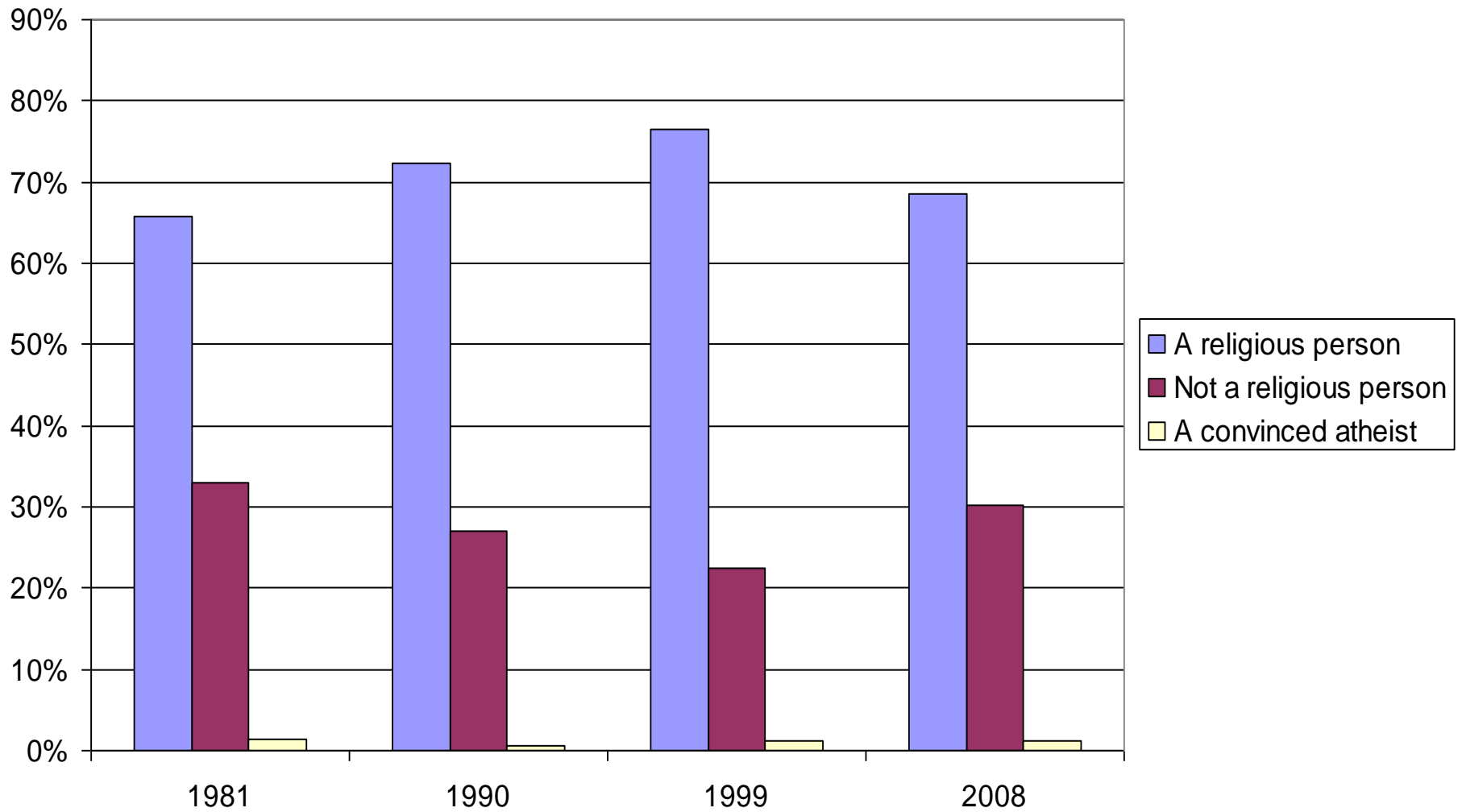
- 96.3% of Irish people who belong to a religious denomination are Roman Catholic.
- 3.9% belong to the Church of Ireland.
- Others make up just 2% of those belonging a religious denomination.



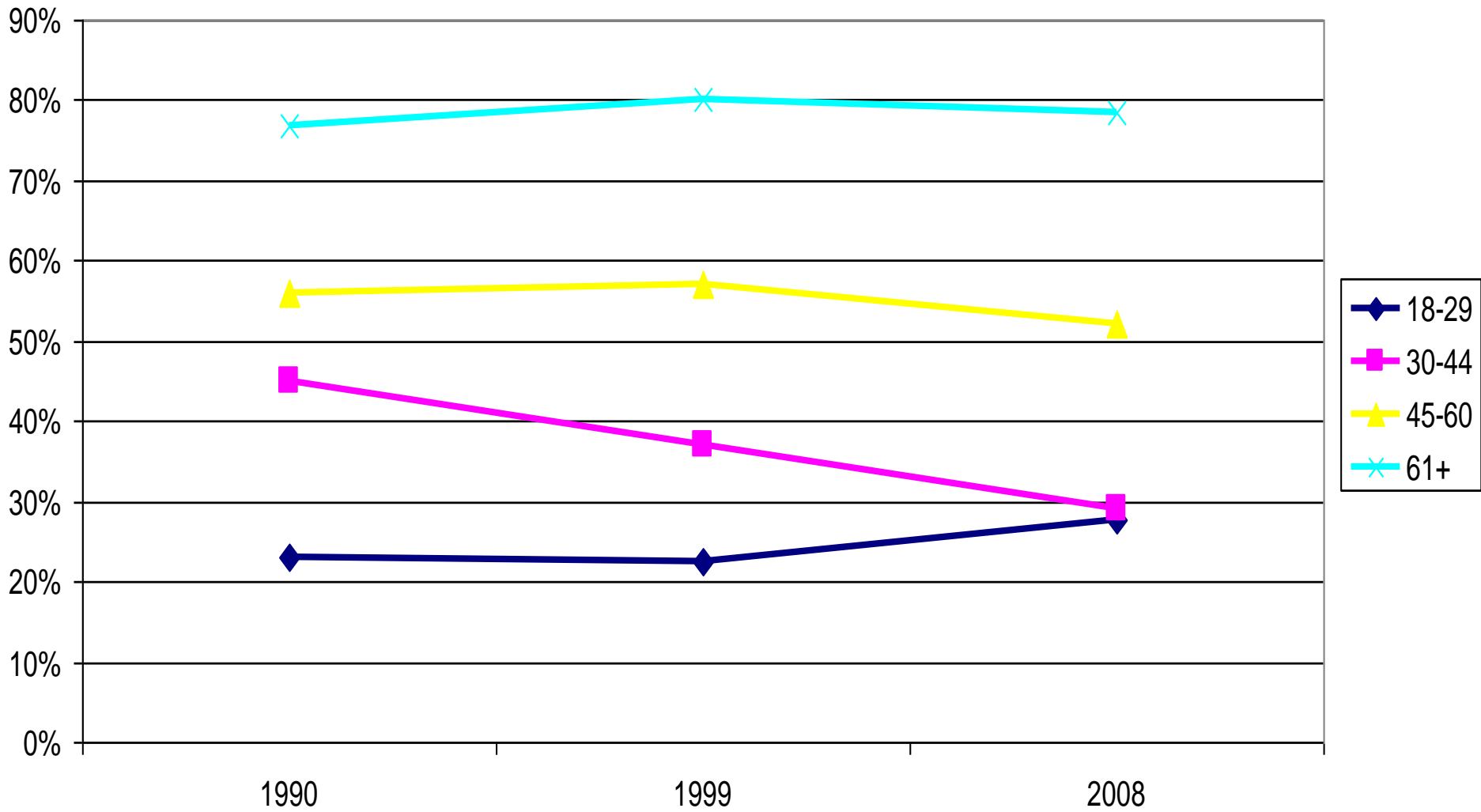
% Within age group not belonging to a Religious Denomination



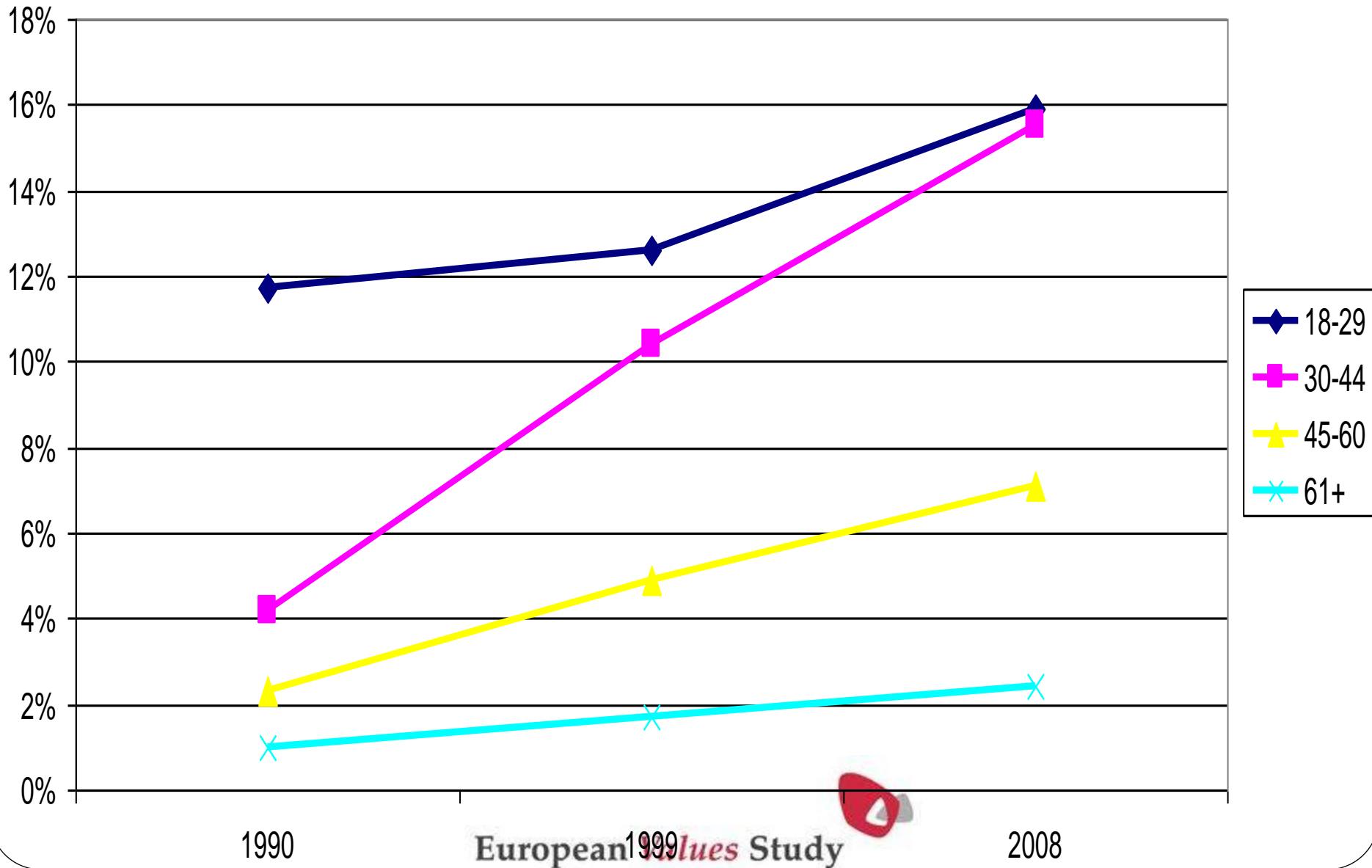
Self-definition as religious or atheistic



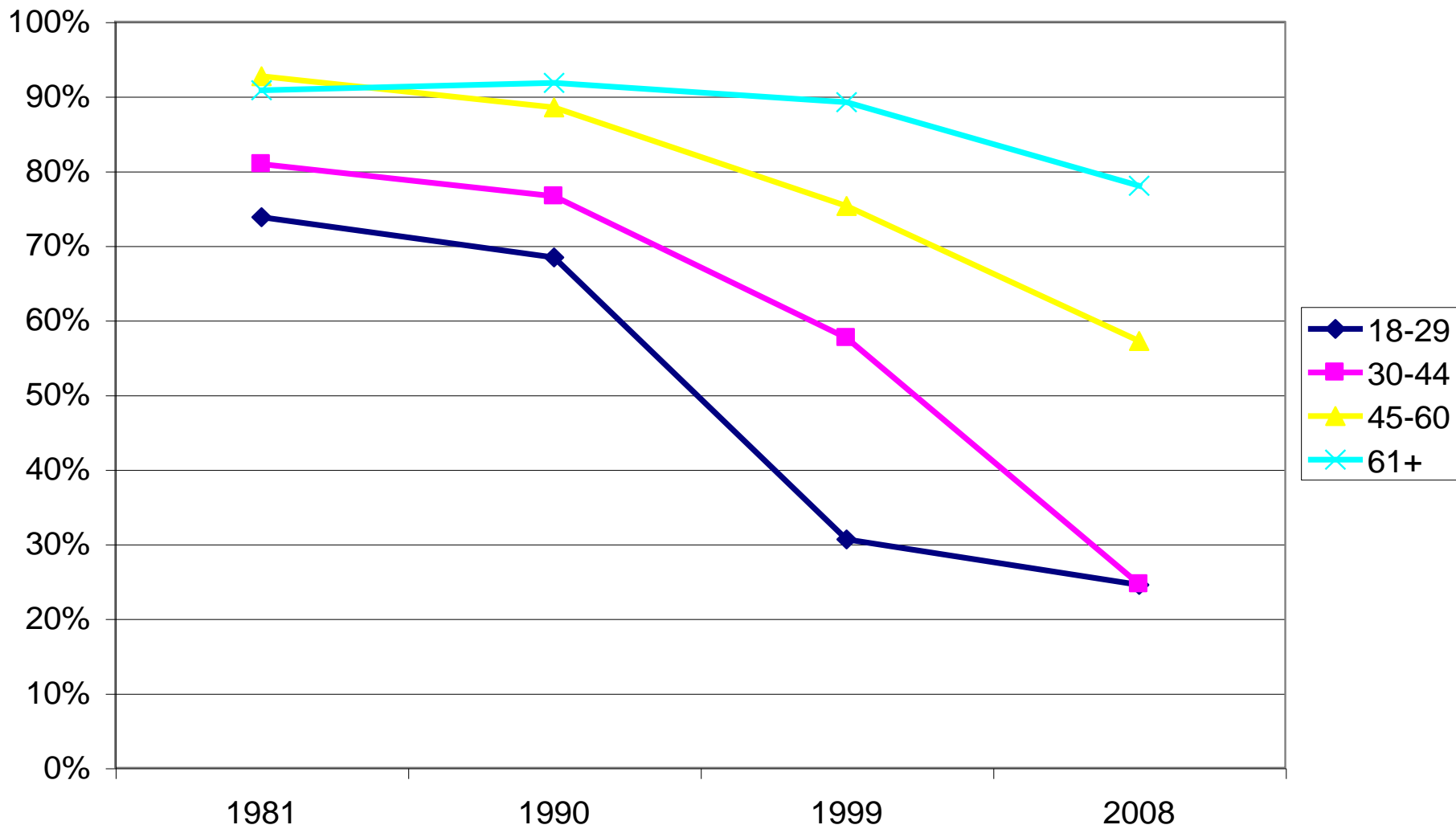
% Within age group who Pray Everyday or Often



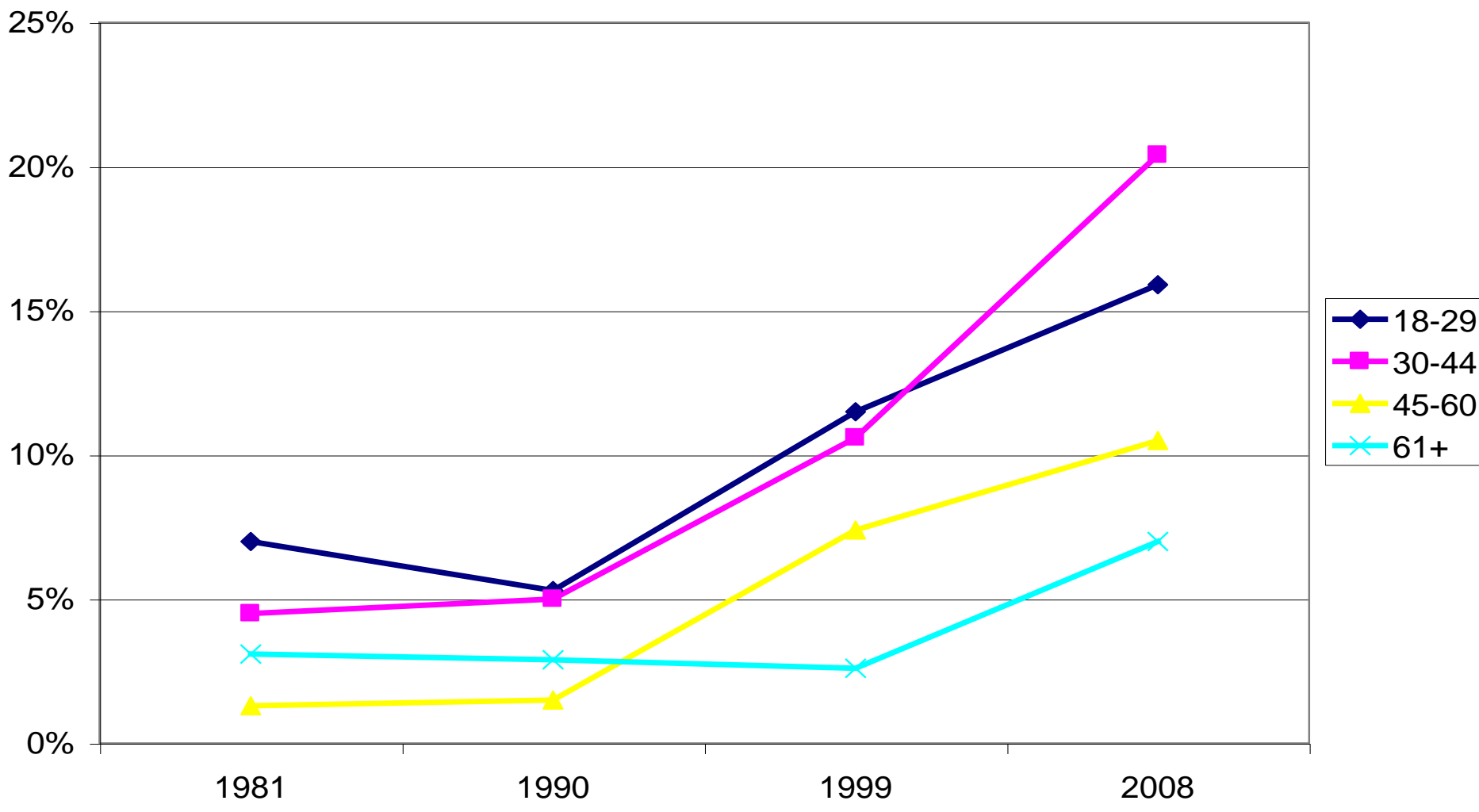
% Within age group who Never Pray



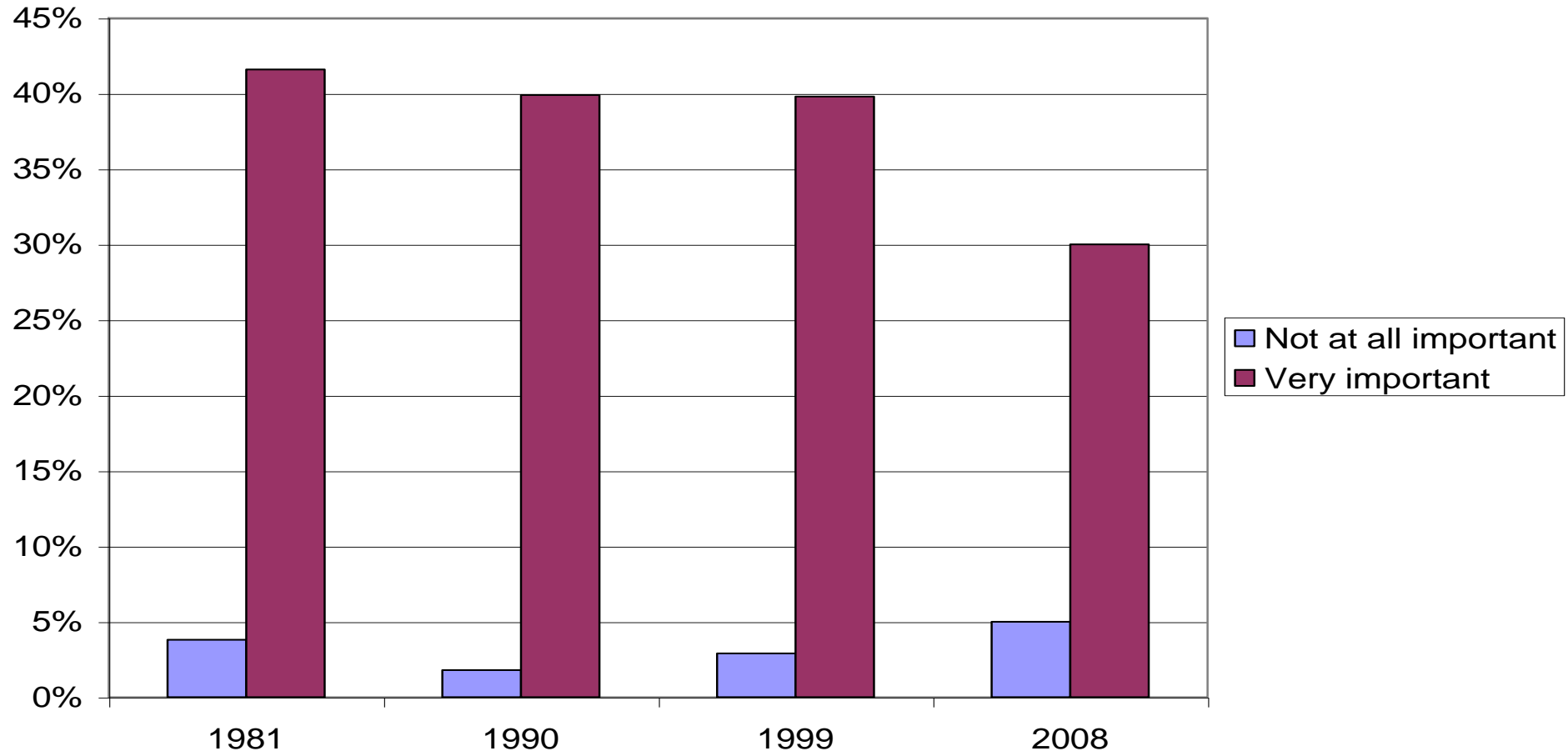
% Within age group who attend service once a week or more



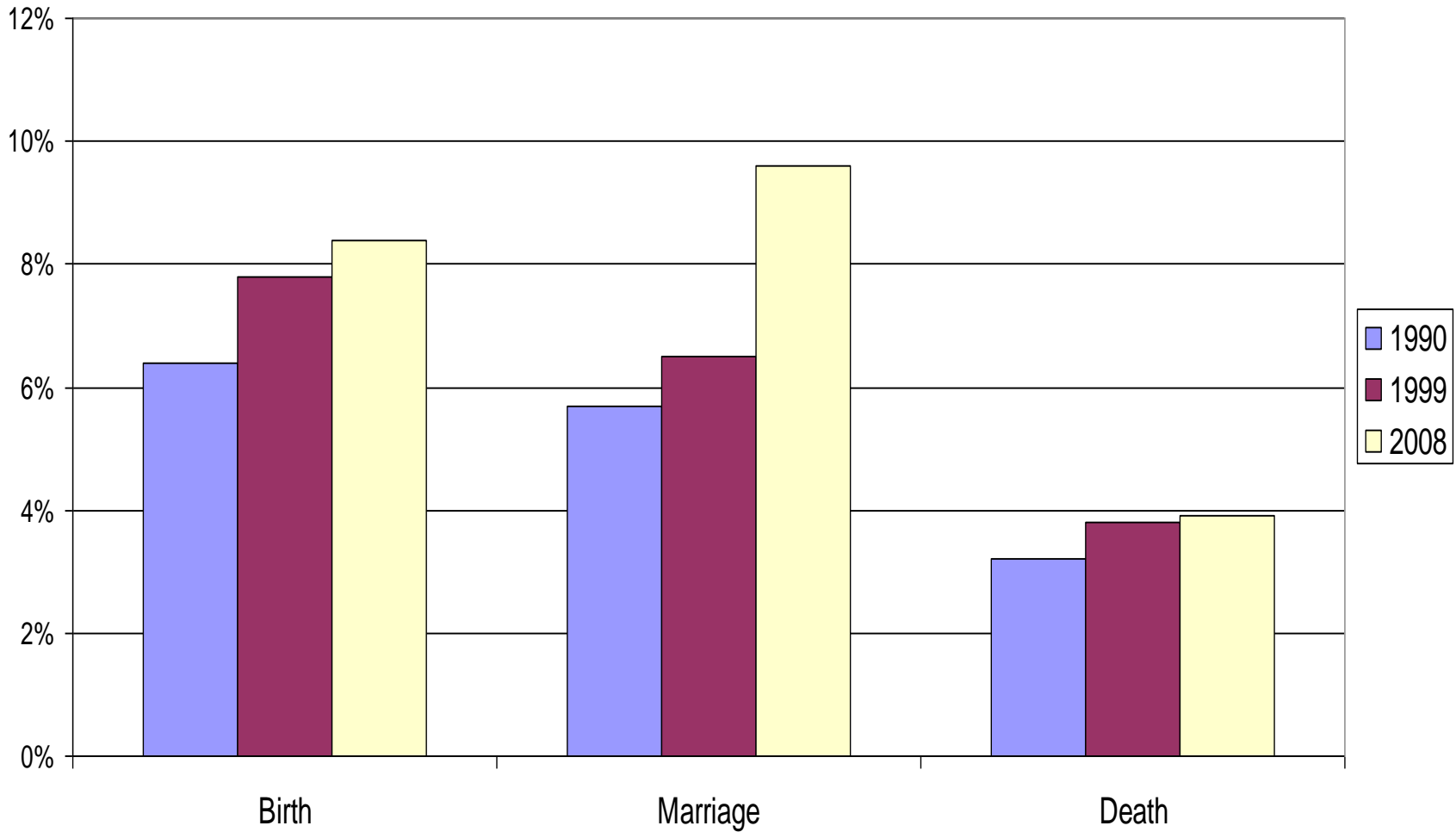
% Within age group who never attend religious service



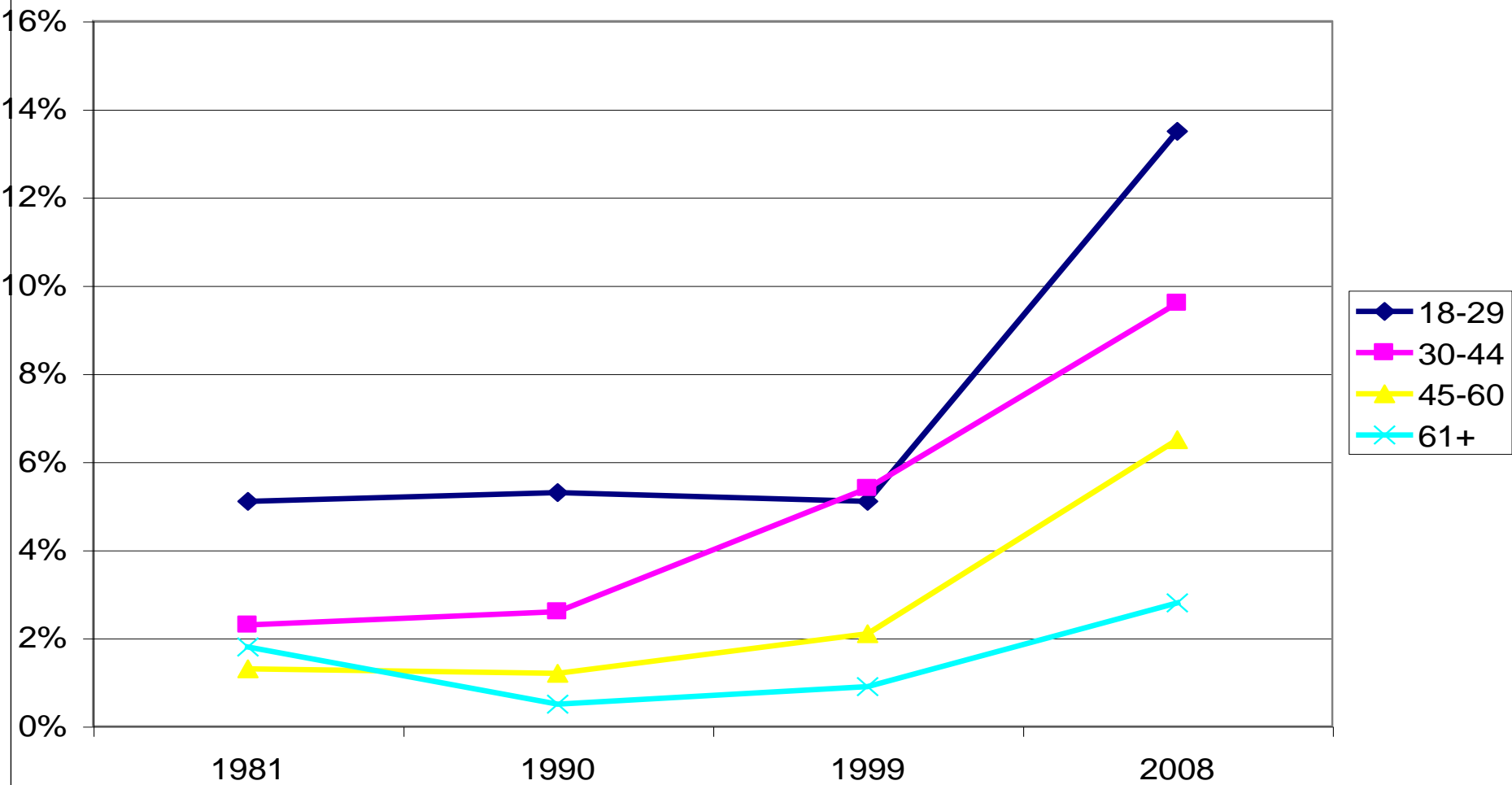
Importance of God



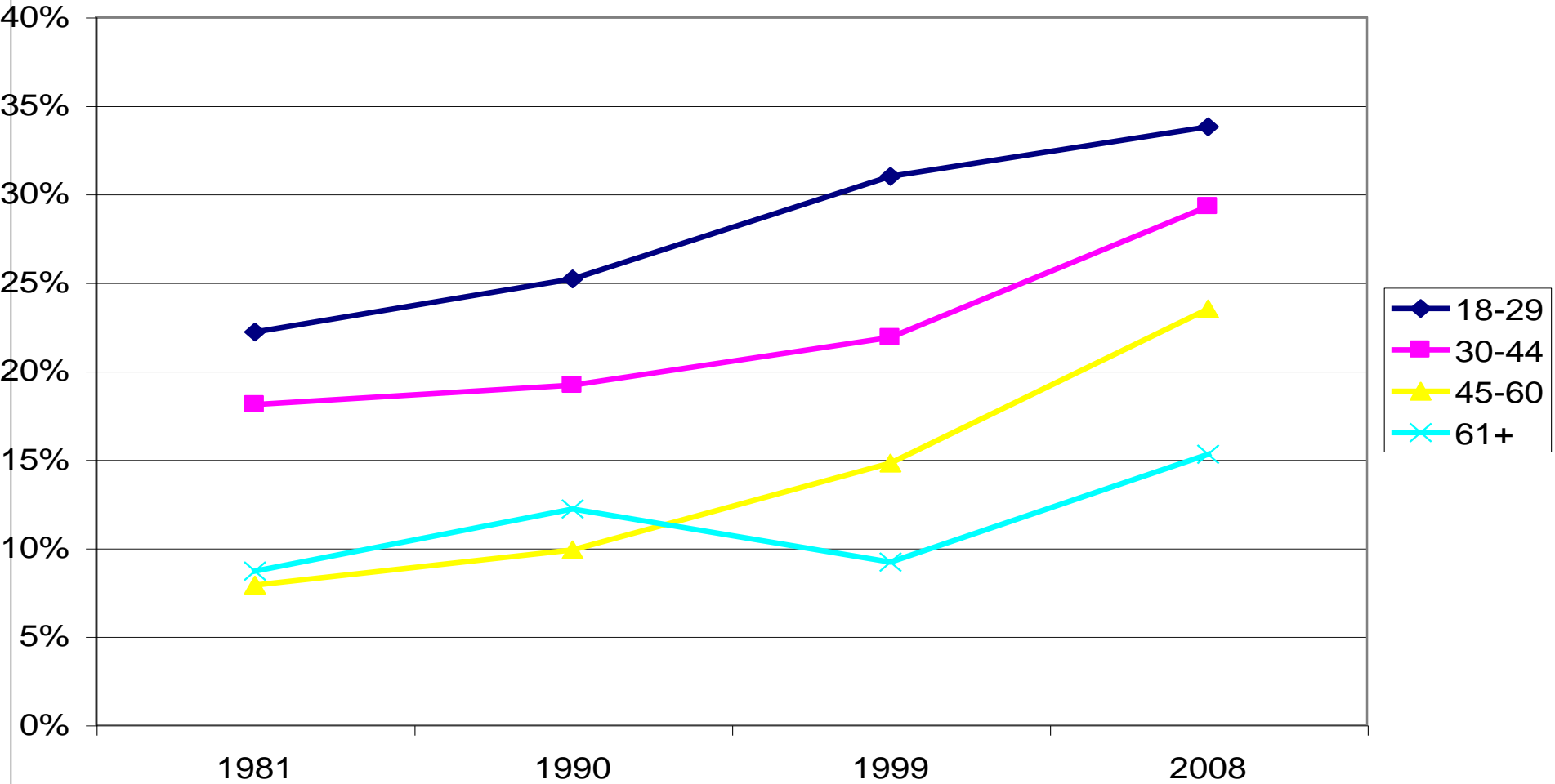
Importance of Religious Services



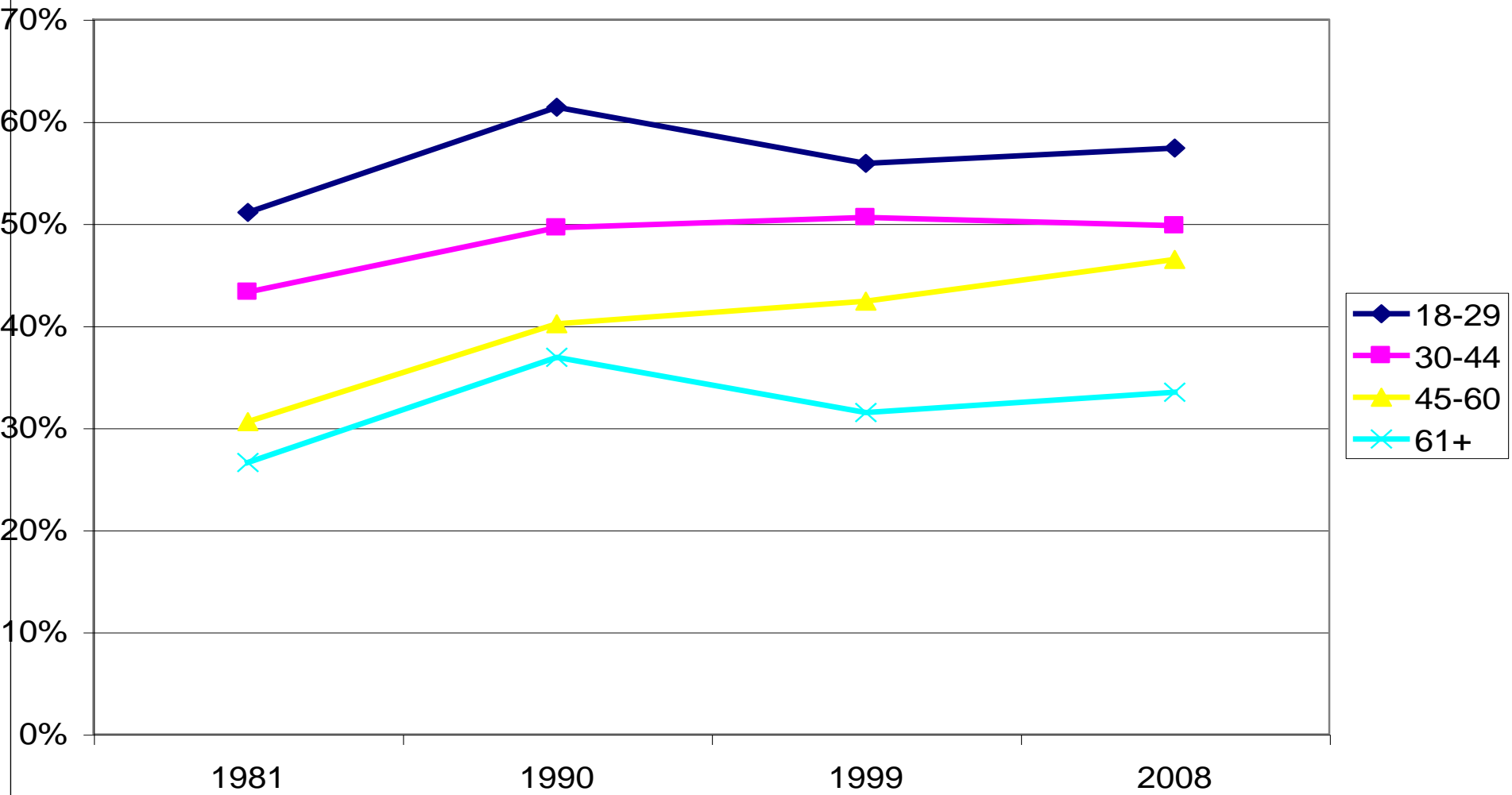
% Within age group who do not believe in God



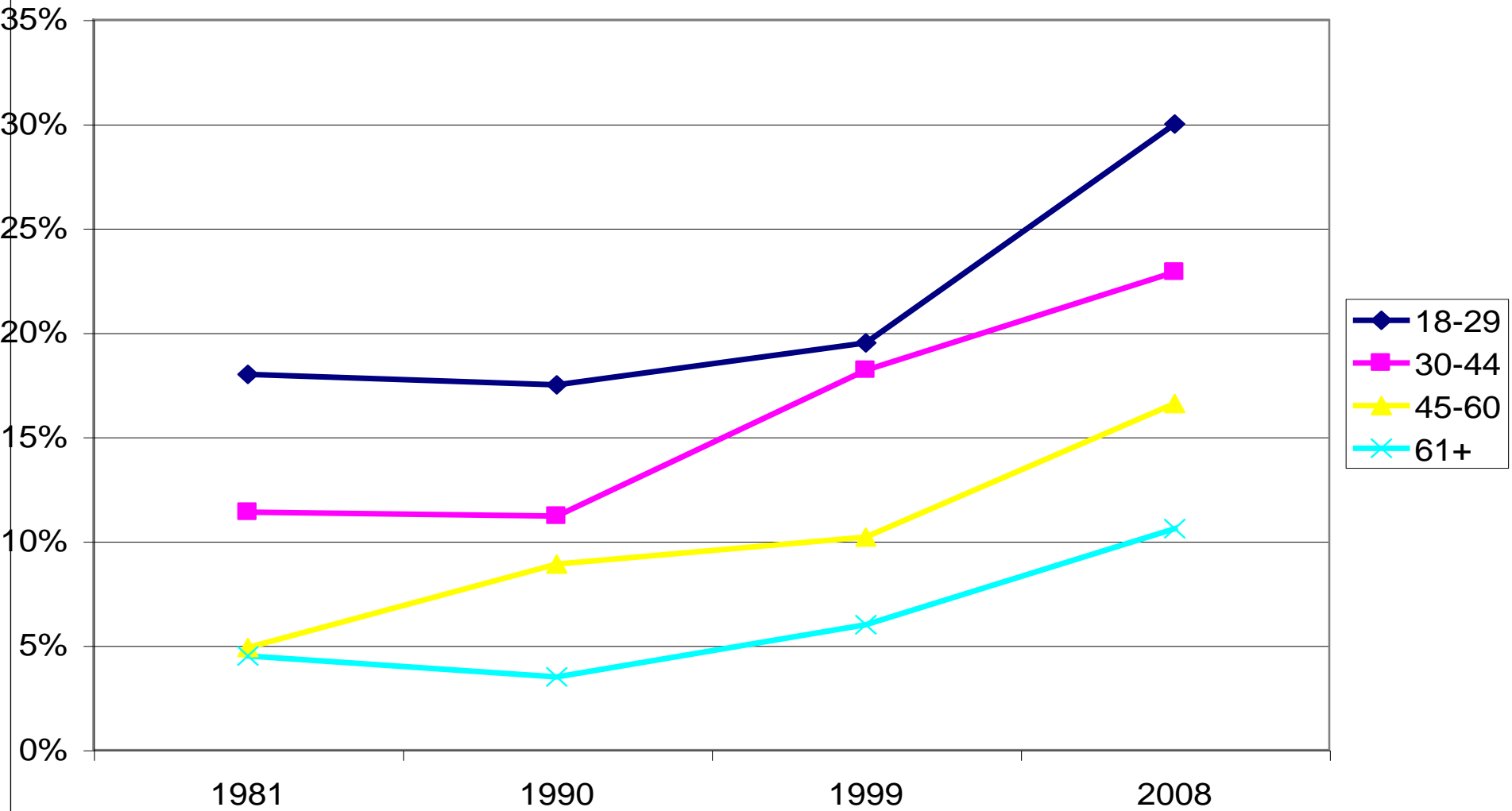
% Within age group who do not believe in Life after Death



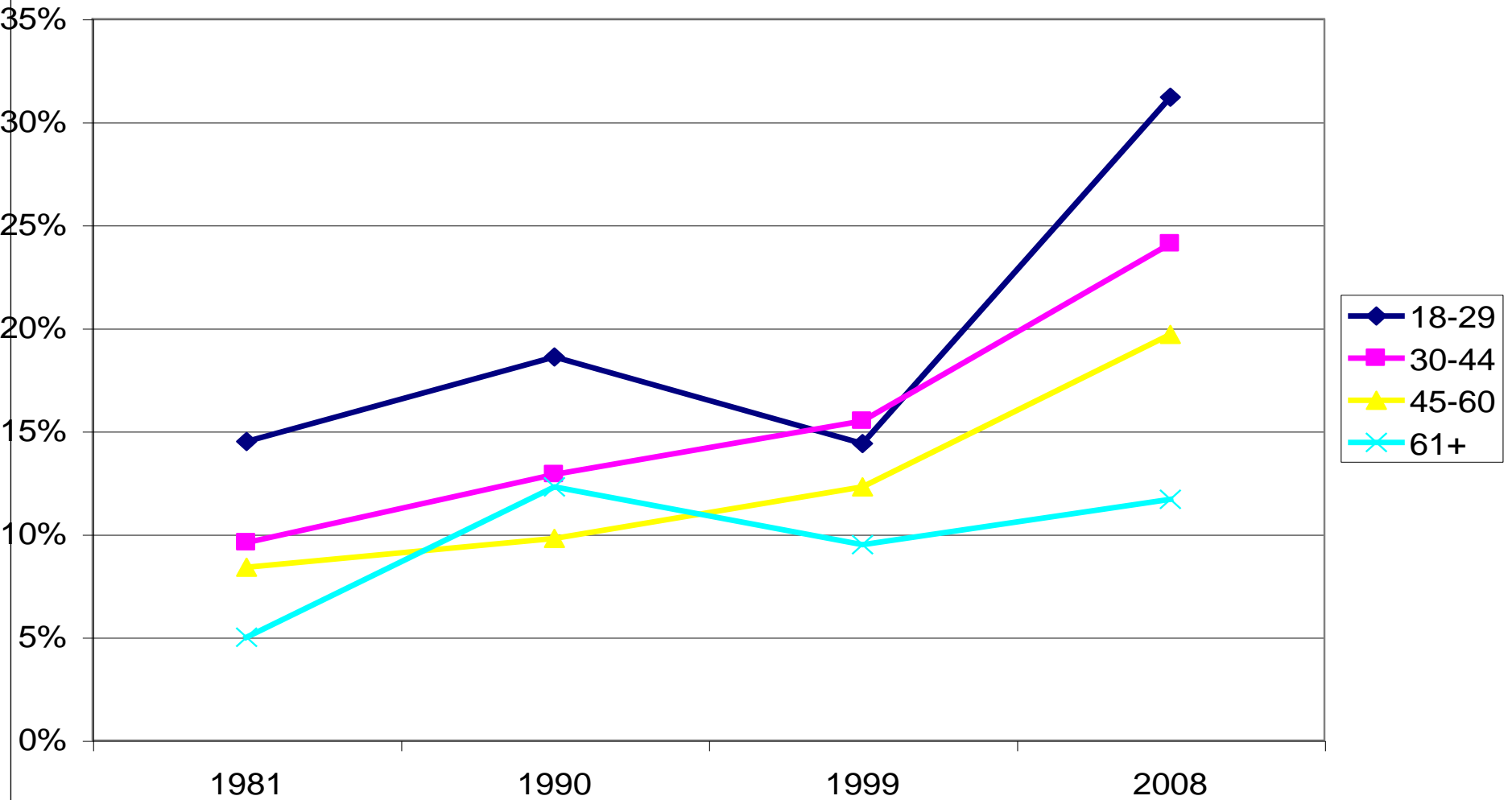
% Within age group who do not believe in Hell



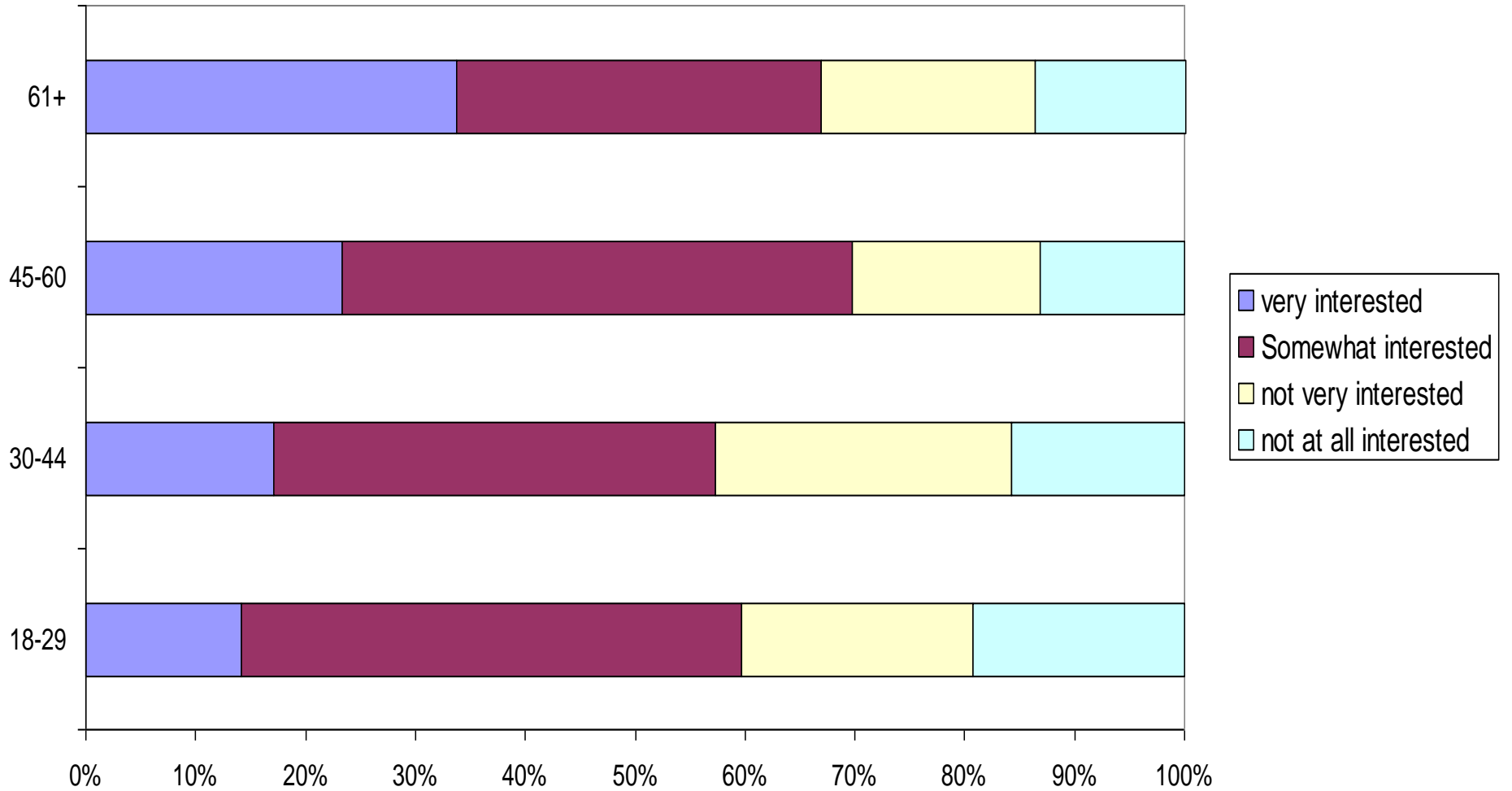
% Within age group who do not believe in Heaven



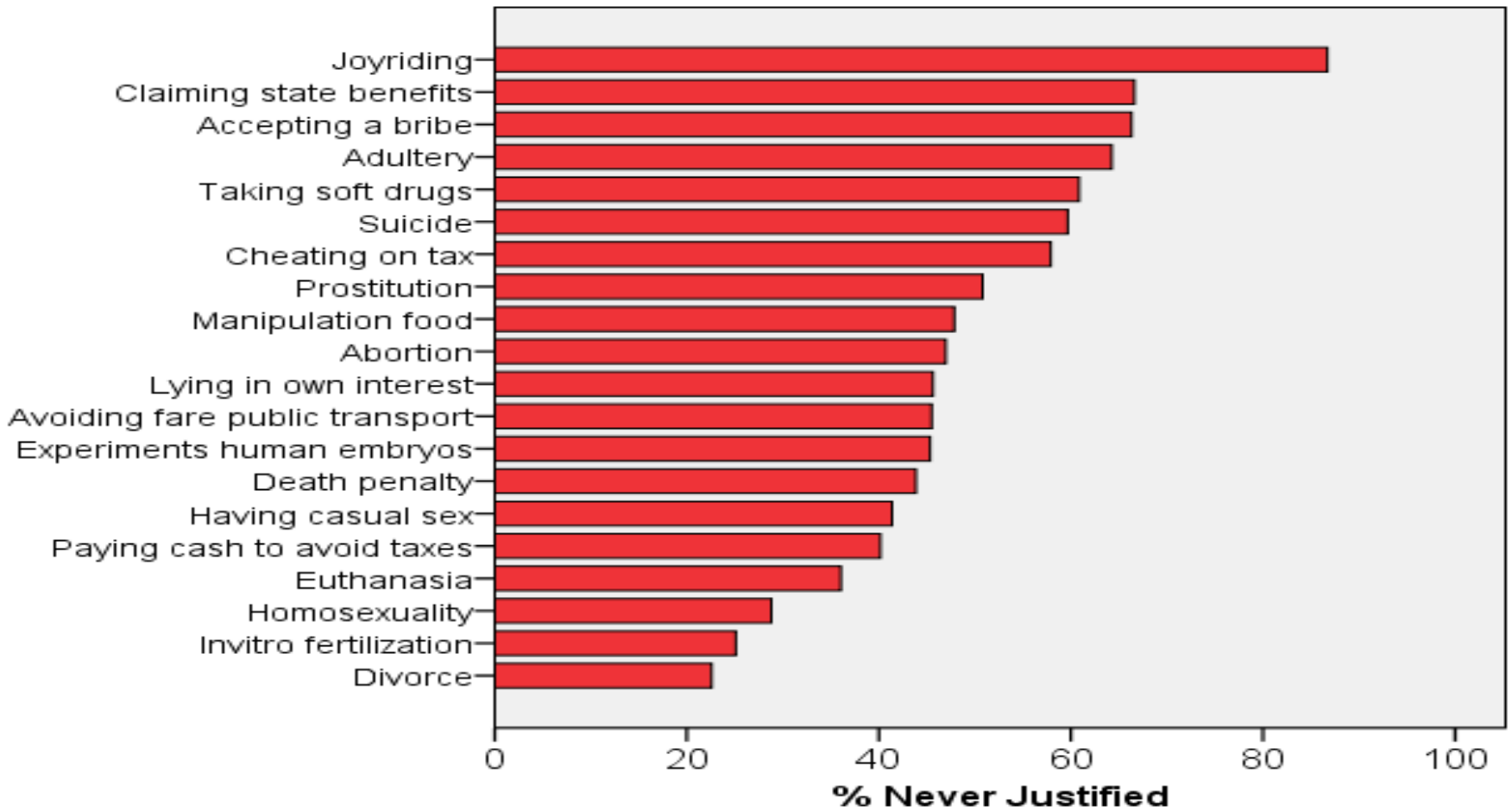
% Within age group who do not believe in Sin



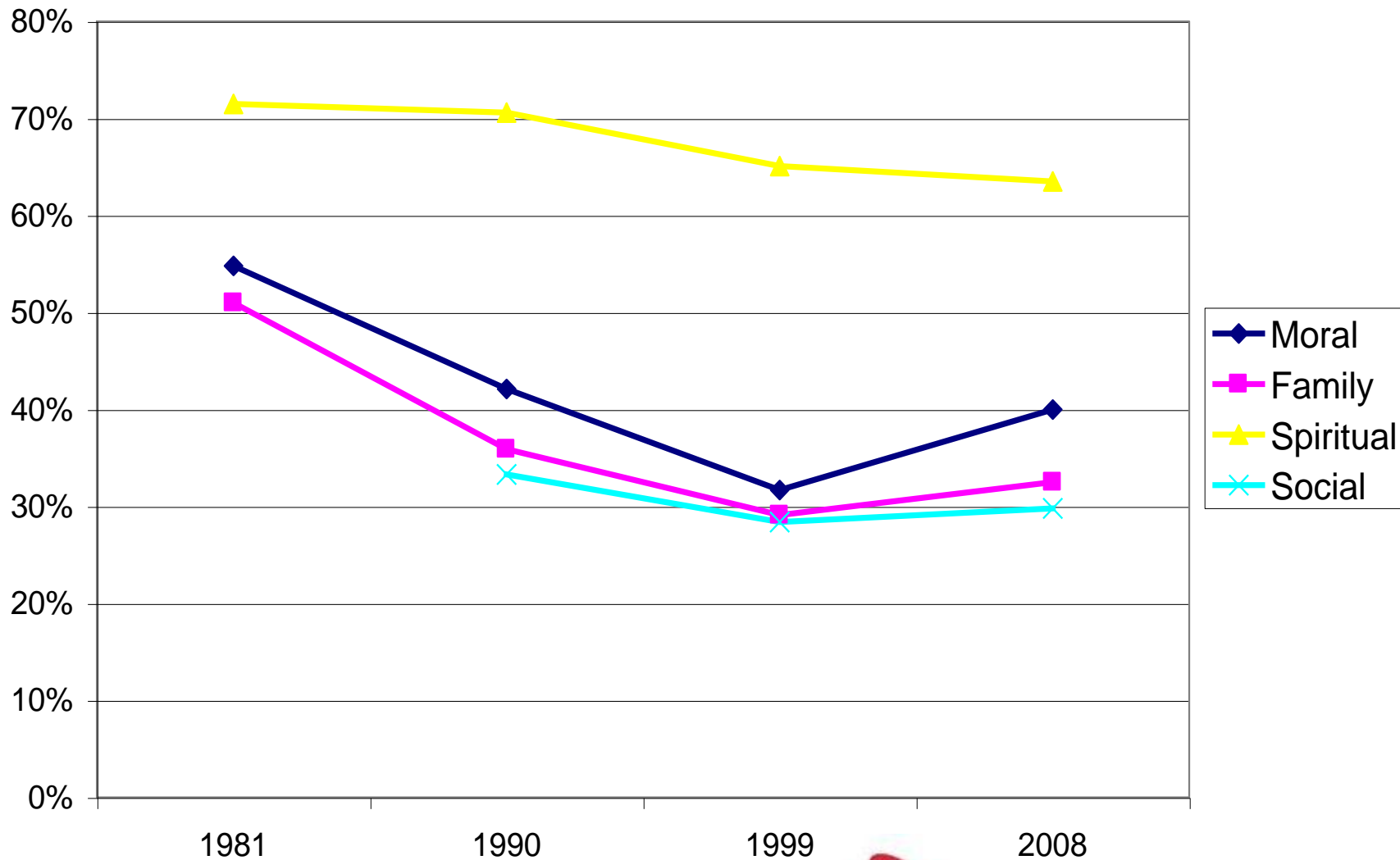
Spirituality



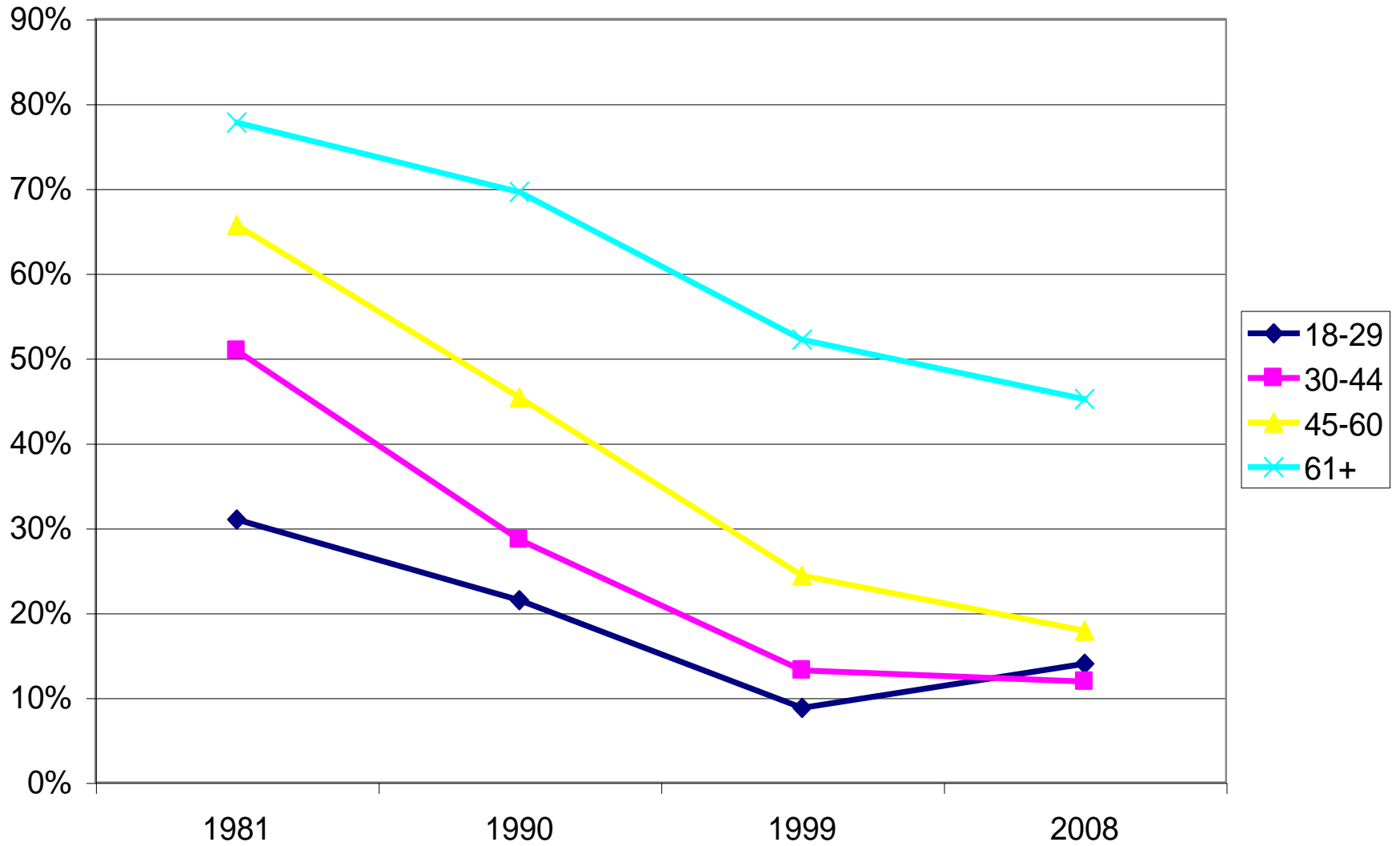
Morality



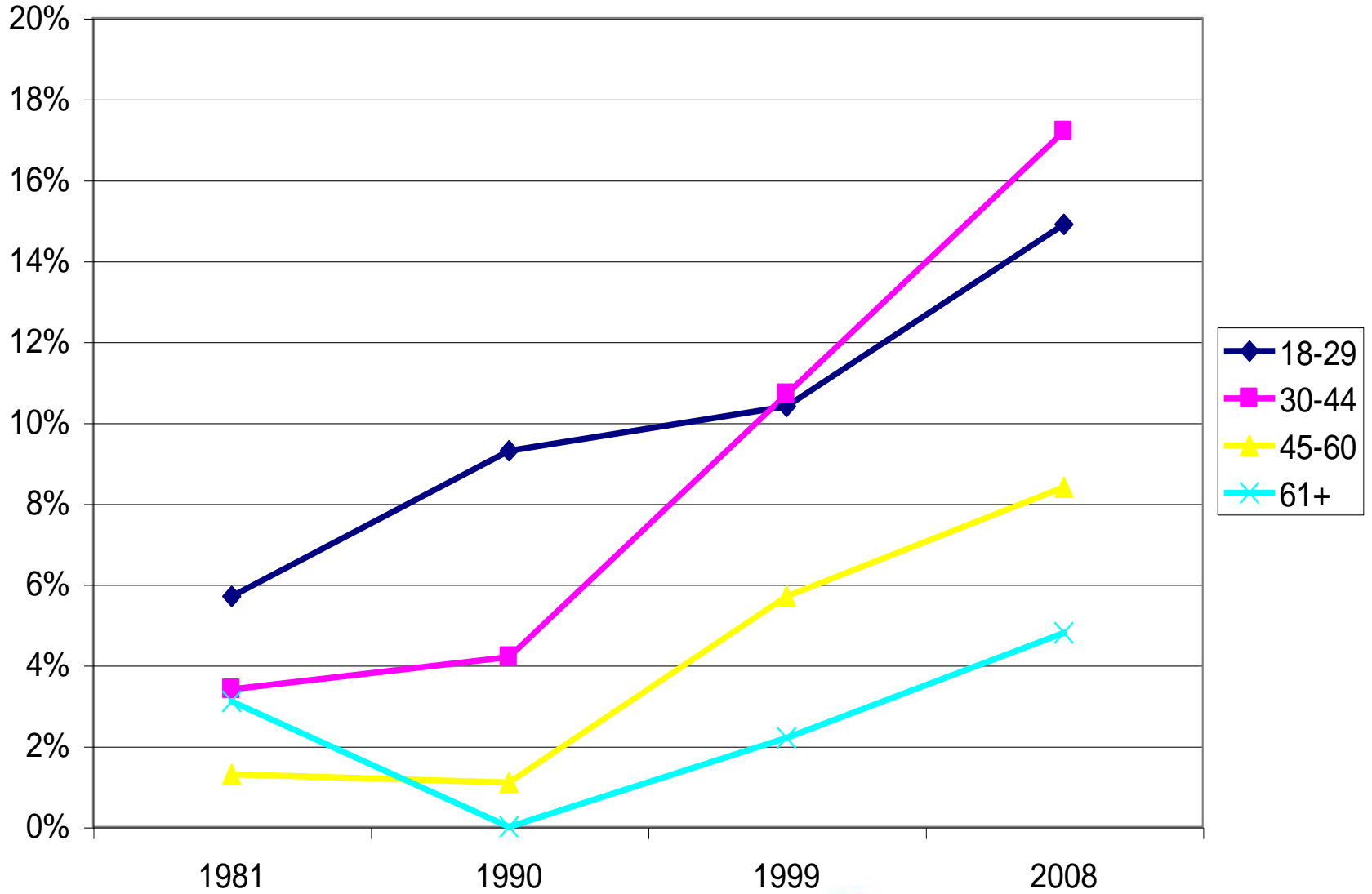
Church Answering the Problems of Everyday Life?



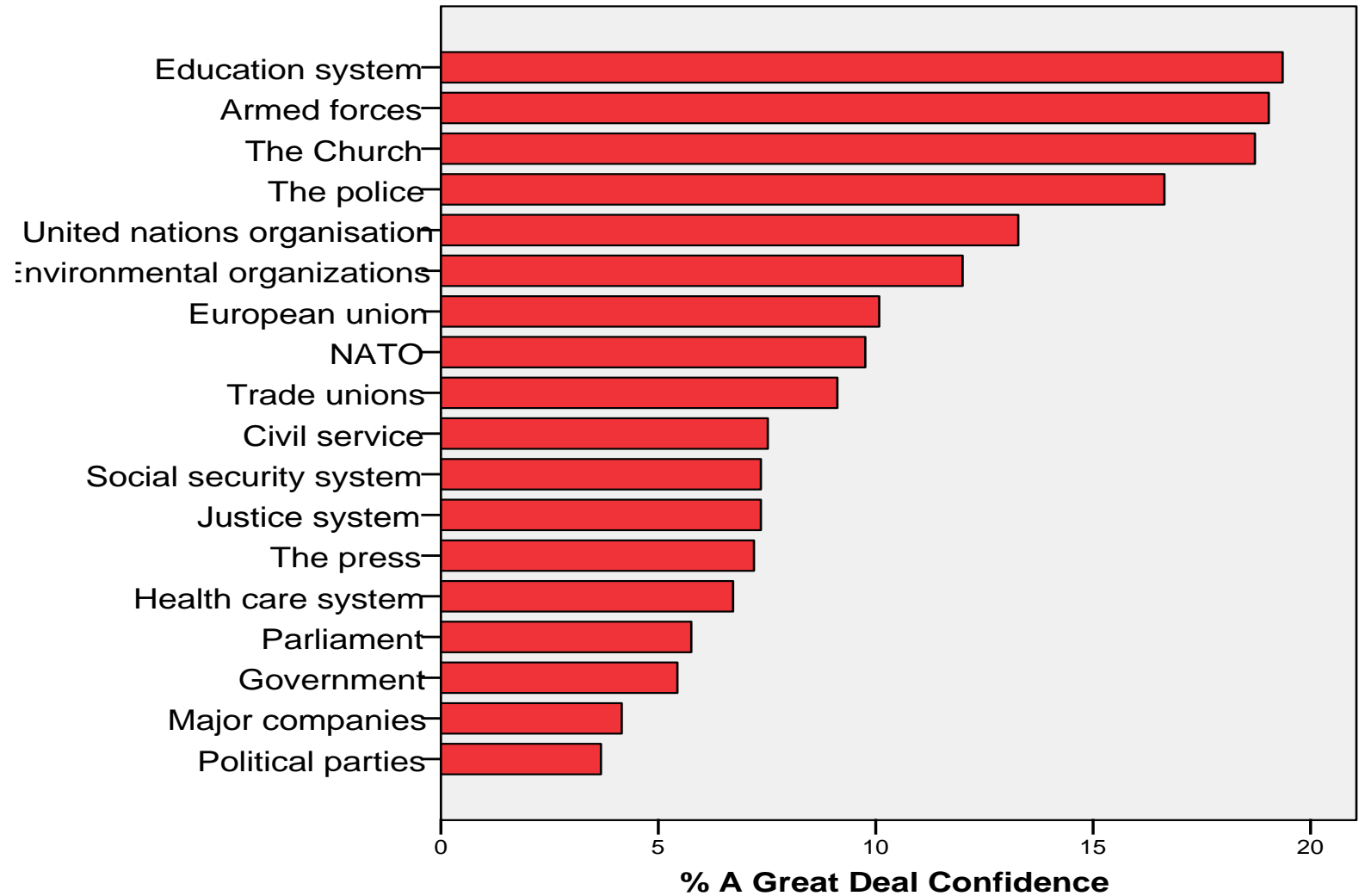
% Within Age: A Great Deal of Confidence in Church



% Within age group: None at all Confidence in Church



A Great Deal of Confidence



Conclusions 1

- Religious practice has decreased
- Spirituality remains strong
- Significant age differences have become more marked
- The importance of the institutional churches is diminished/diminishing
- There are important implications for society



Conclusions 2

- Health, educational and social care institutions **were** often run by the institutional churches on a voluntary basis. The future is unclear.
- There are social ramifications to a loss of religiosity in society
- What are the alternatives to religious practice and religious faith?
- Where does spirituality fit in



Conclusions 3

- Morality and ethics?
- Religion as private?
- Relationship of faith to public policy, if any?
- Implications for education

